

www.easyLogix.de

Software Development

Plug-In PCB-Investigator:

„Component Analysis“ finds bottlenecks
between components.

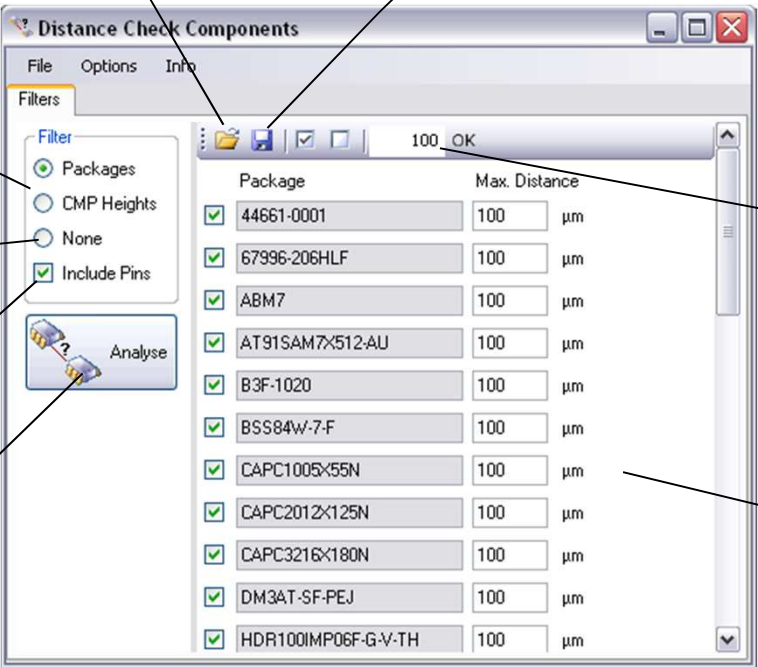
Schindler & Schill GmbH

Bruderwöhrdstraße 15b
93055 Regensburg
Deutschland

Tel: +49 941 604889719
Email: info@easyLogix.de
Web: www.easyLogix.de

Component Analysis Plug-In

After installing the Plug-In you get the new menu item  **Component Analysis** .



The screenshot shows the 'Distance Check Components' dialog box. It has a 'Filters' tab and an 'Analyse' button. The 'Filter' section includes radio buttons for 'Packages', 'CMP Heights', and 'None', and a checked checkbox for 'Include Pins'. The main area is a table with columns for 'Package' and 'Max. Distance'. The table lists various component packages with a checked checkbox and a distance value of 100 µm. Callouts point to various elements: 'Open Settings' points to the folder icon; 'Save the settings' points to the save icon; 'Show components by packages or height' points to the 'Packages' radio button; 'Show all components on top or bottom' points to the 'None' radio button; 'Includes Pins in the analysis' points to the 'Include Pins' checkbox; 'Start the analysis' points to the 'Analyse' button; 'Enter maximum distance for all components and confirm with OK' points to the '100 OK' input field; and 'Enter maximum distance for every single component' points to the '100 µm' input field in the table.

Open Settings

Save the settings

Show components by packages or height

Show all components on top or bottom

Includes Pins in the analysis

Start the analysis

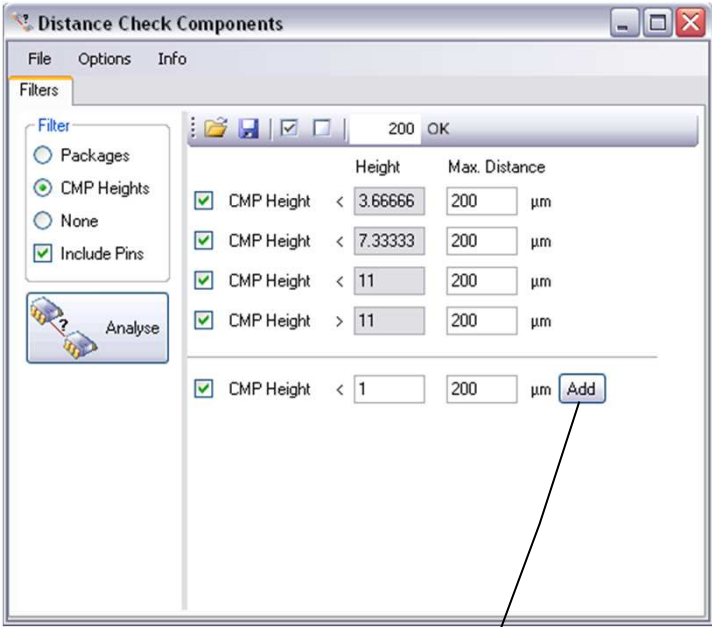
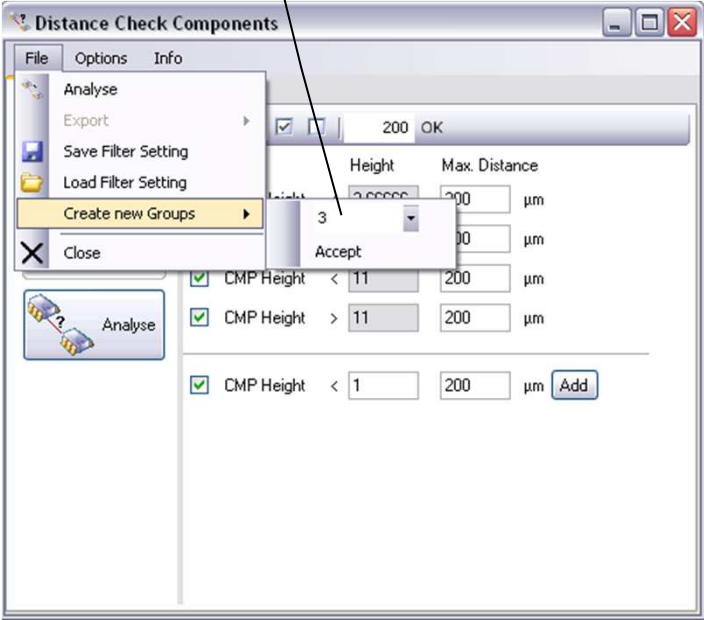
Enter maximum distance for all components and confirm with OK

Enter maximum distance for every single component

Package	Max. Distance
<input checked="" type="checkbox"/> 44661-0001	100 µm
<input checked="" type="checkbox"/> 67996-206HLF	100 µm
<input checked="" type="checkbox"/> ABM7	100 µm
<input checked="" type="checkbox"/> AT91SAM7X512-AU	100 µm
<input checked="" type="checkbox"/> B3F-1020	100 µm
<input checked="" type="checkbox"/> BSS84W-7-F	100 µm
<input checked="" type="checkbox"/> CAPC1005X55N	100 µm
<input checked="" type="checkbox"/> CAPC2012X125N	100 µm
<input checked="" type="checkbox"/> CAPC3216X180N	100 µm
<input checked="" type="checkbox"/> DM3AT-SF-PEJ	100 µm
<input checked="" type="checkbox"/> HDR100IMP06F-G-V-TH	100 µm

Component Analysis Plug-In

Set number of heights in the list and confirm with „Accept”



Add a new height to the list

Component Analysis Plug-In

List of results after the analysis

The screenshot shows a window titled "Distance Check Components" with a menu bar (File, Options, Info) and a "Filters" tab. The main area displays a table with the following data:

ID	Layer Name	Distance in mm	CMP1	CMP1 Package	CMP1 Heig
1	comp_+_top	0.000	U2	AT91SAM7X51...	1.600
2	comp_+_top	0.000	U2	AT91SAM7X51...	1.600
3	comp_+_top	100.000	Y1	ABM7	1.250
4	comp_+_top	0.000	Y1	ABM7	1.250
5	comp_+_top	50.000	C34	CAPC1005X55N	0.550
6	comp_+_top	50.000	C11	CAPC1005X55N	0.550
7	comp_+_top	49.997	C5	CAPC1005X55N	0.550
8	comp_+_top	49.997	C13	CAPC1005X55N	0.550
9	comp_+_top	100.000	C22	CAPC1005X55N	0.550
10	comp_+_top	50.000	C17	CAPC1005X55N	0.550
11	comp_+_top	50.000	C12	CAPC1005X55N	0.550
12	comp_+_top	50.002	C23	CAPC2012X125N	1.250
13	comp_+_top	99.997	C24	CAPC3216X180N	1.800
14	comp_+_top	50.000	C5	BSS84W-7-F	1.000

Callouts and actions shown in the image:

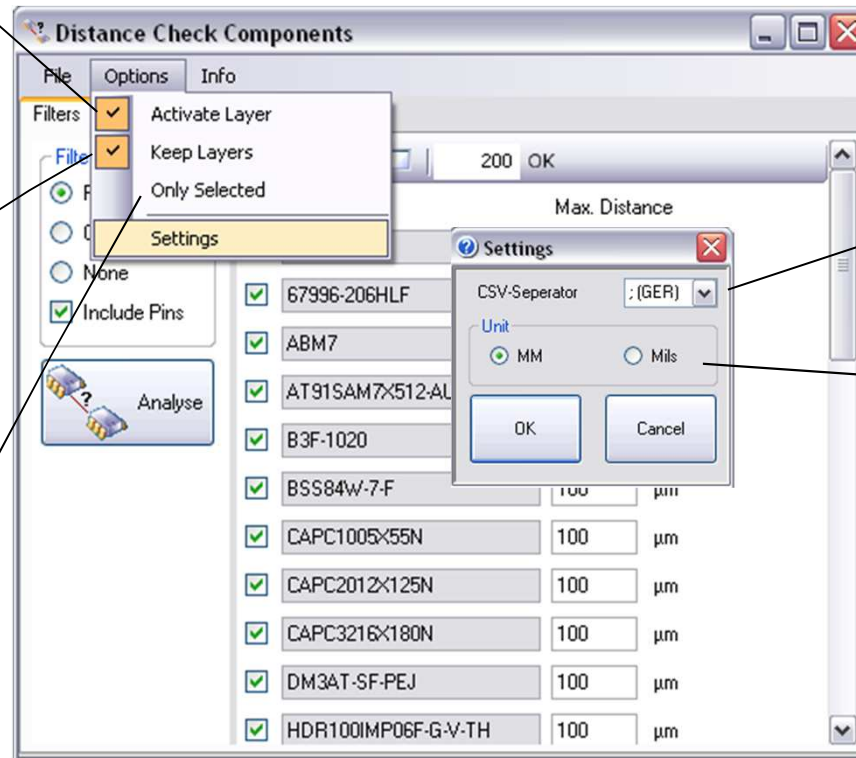
- Print the list with Print Preview and Page Setup**: Points to the "Print", "Print Preview", and "Page Setup" menu items.
- Export the list as CSV and copy**: Points to the "Export List" and "Copy" menu items.
- Show the list without filter**: Points to the "Remove Filter" menu item.
- Filter the list by using the drop-down menu or by manual input**: Points to the filter input fields at the top of the table.
- Visualize selected component in the pcb (also possible by double click)**: Points to the "Select and Zoom" menu item.

Component Analysis Plug-In

Activate a by double-click selected layer in the layer list

Keep activated layers activate when selecting another layer

Include only selected components in the analysis



Specify the country setting for the export as CSV

Set the unit

Component Analysis Plug-In

- Find bottlenecks between components with the „Component Analysis“ Plug-In and guarantee a smooth production.
- First set a filter to sort components by packages or heights or no filter for showing all components of one layer.
- Enter the maximum distance either simultaneously for all components or for every single one.
- You can save these settings and work with them the next time.
- Analyzing the components grouped by heights, you can determine by how many different heights (File → Create new Groups) or add a new height to the list afterwards.
- After the analysis you have different possibilities: Filtering the list to show only certain components or layers, selecting a component and visualize it on the board and printing or exporting the list as CSV.
- With options you can determine if you want selected layers to be activated in the layer list as well and if you want to keep them activated when further layers are activated. The list can also be created with selected components only.
- With settings you specify the unit and the country setting for the CSV-export for a perfect presentation.